

[Home](#) » [Windows 8](#) » How [To Install](#) An Un-Signed 3rd Party Driver...

How To Install An Un-Signed 3rd Party Driver in Windows 8

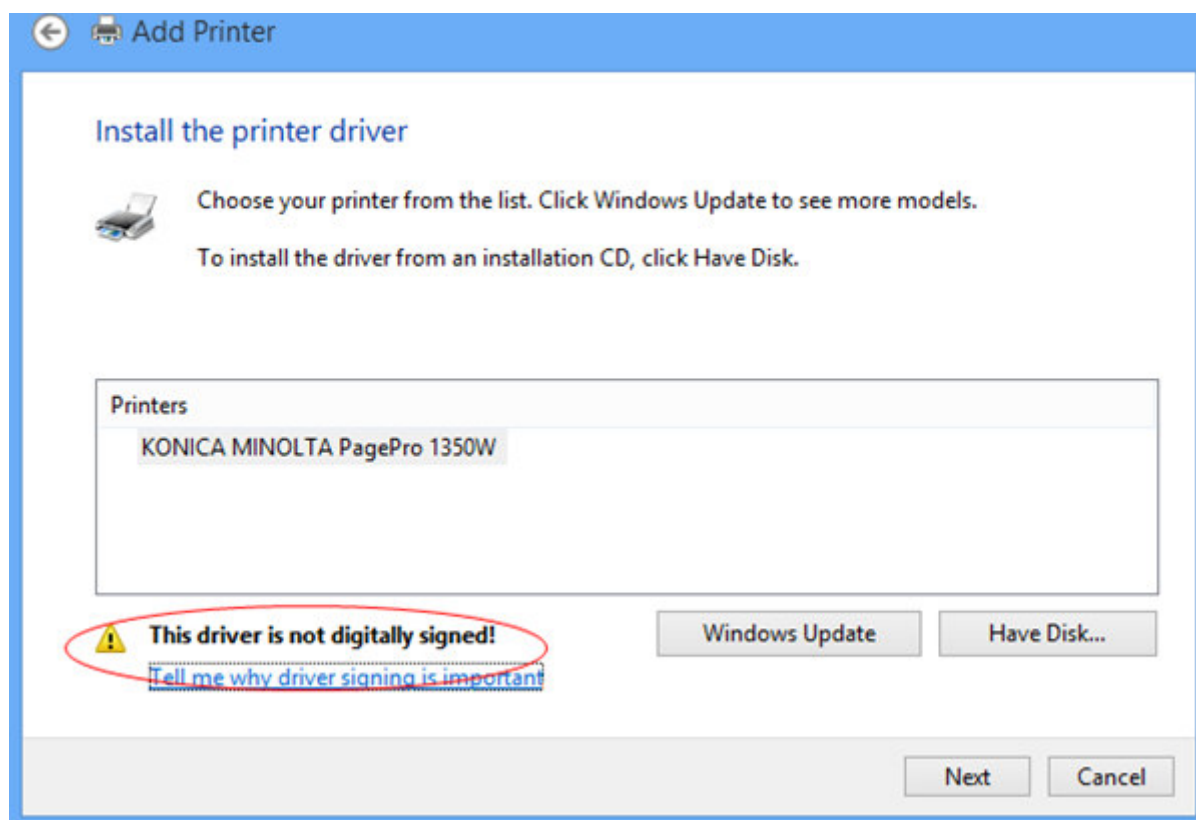
Free Download 3D CAD CAM



www.zwsoft.com/3dcad

Powerful CAD/CAM solution with
Mold Modeling & CNC Machining,
Try Now!

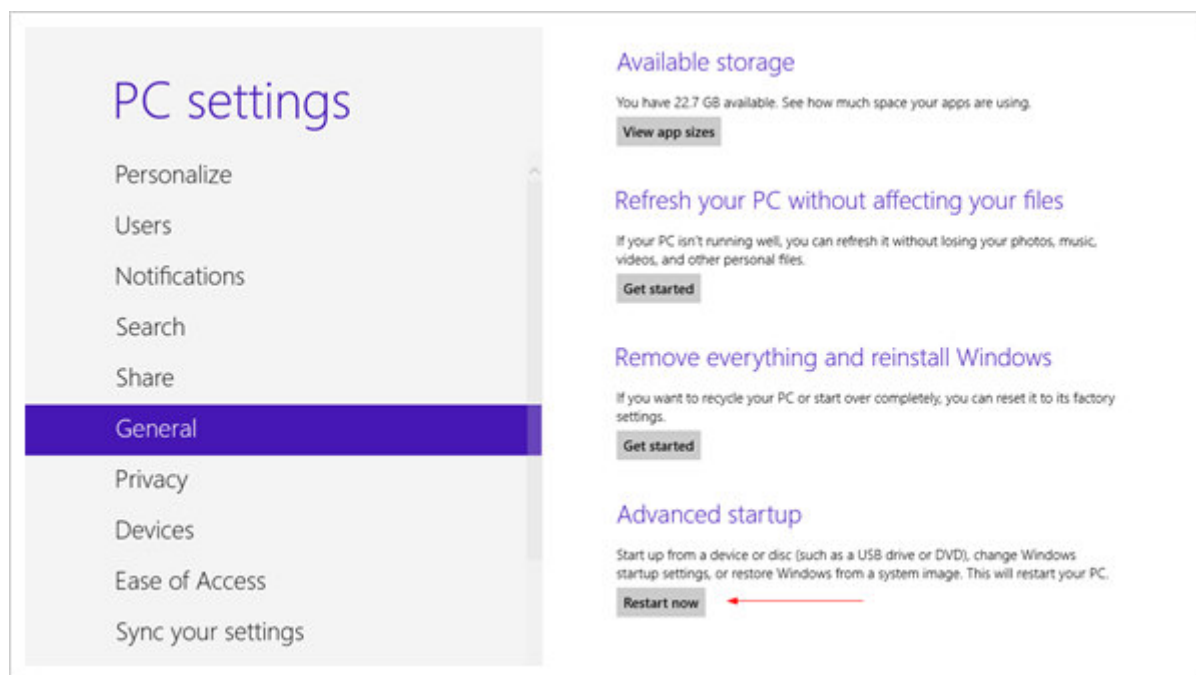
I have a very old Knoica Minolta laser printer at home. And when I tried to install it on my newly installed Windows 8 machine, I was told that the driver can't be installed because the INF file is not digitally signed. It doesn't even give me the choice to go ahead anyway. So how can I bypass this restriction to have my un-signed driver installed?

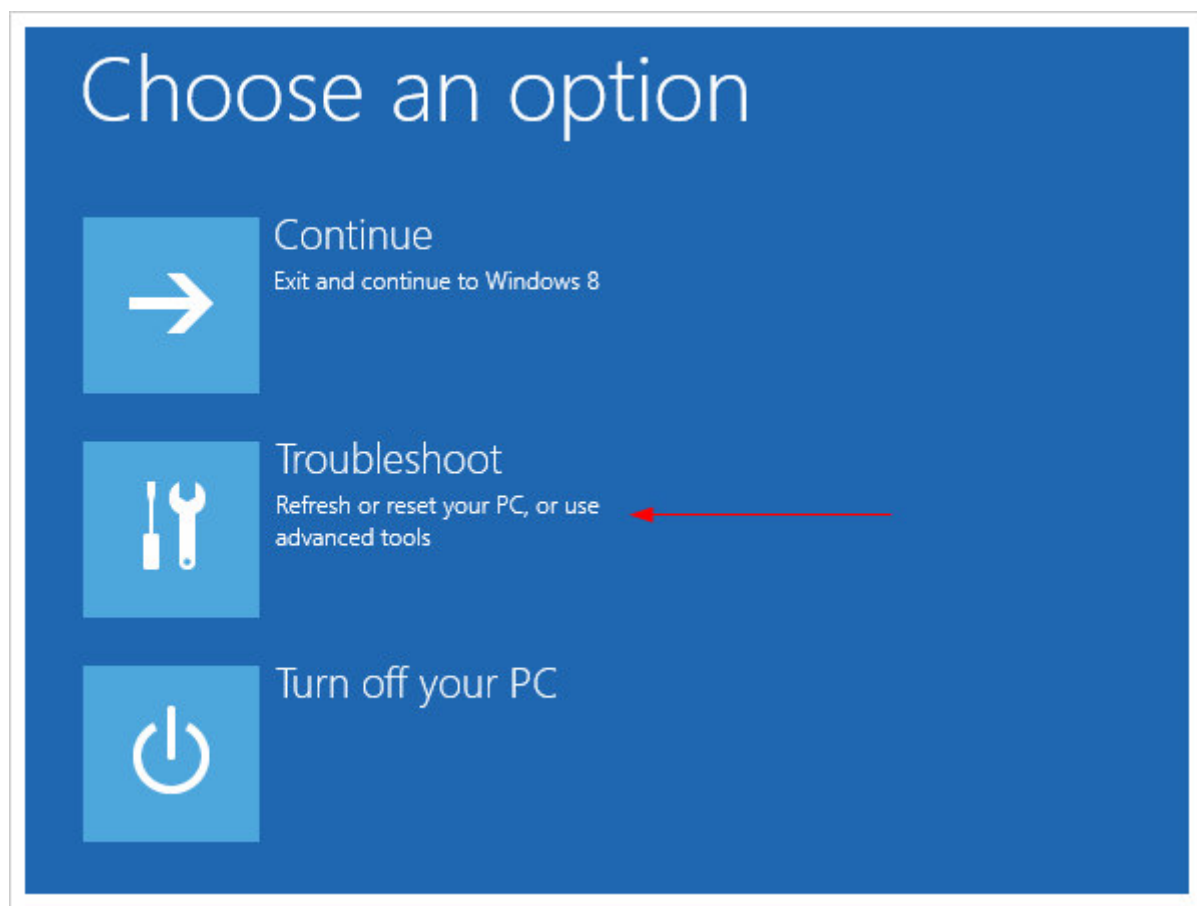


Here is what I figured and did to get around it.

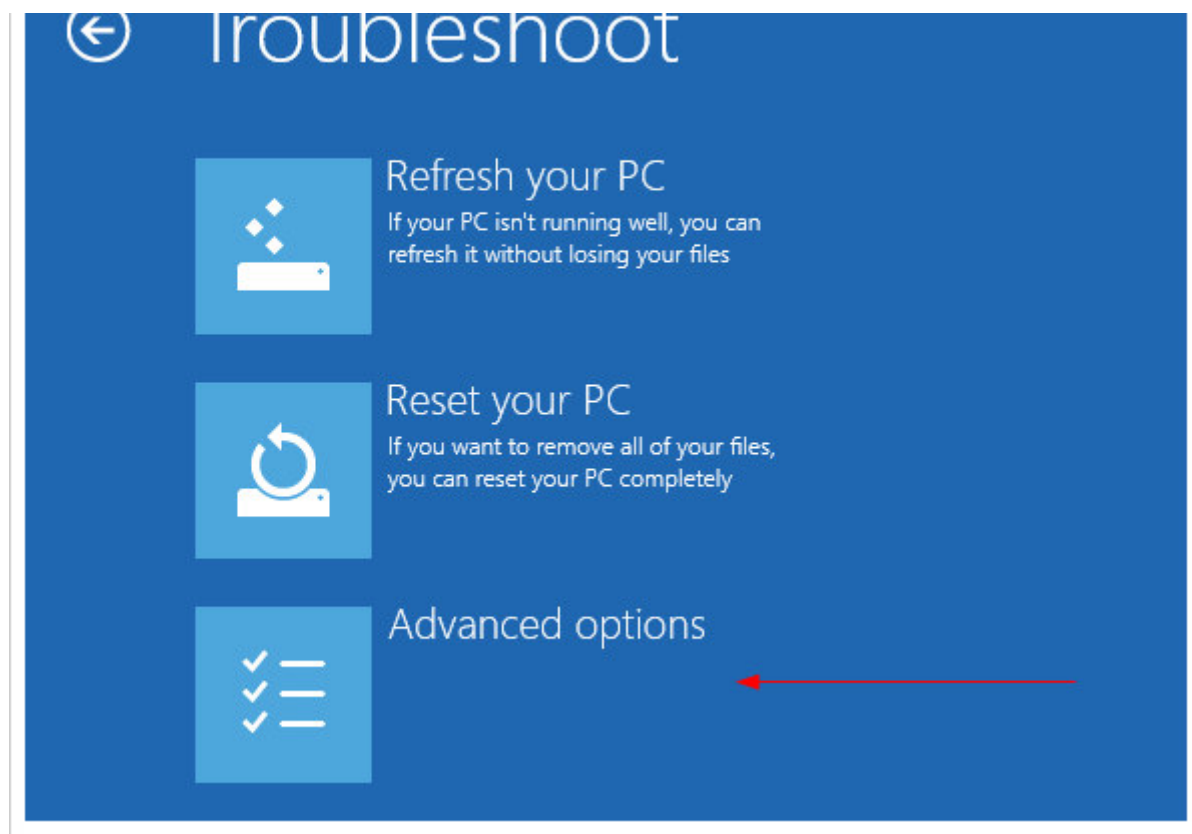
First, press **win + I** to launch the charm bar, and click **Change PC Settings** at the bottom.

Then, go to **General**, and scroll to the bottom of the page, click **Restart Now** button under **Advanced Startup** section. Remember to save all your work first before clicking it.

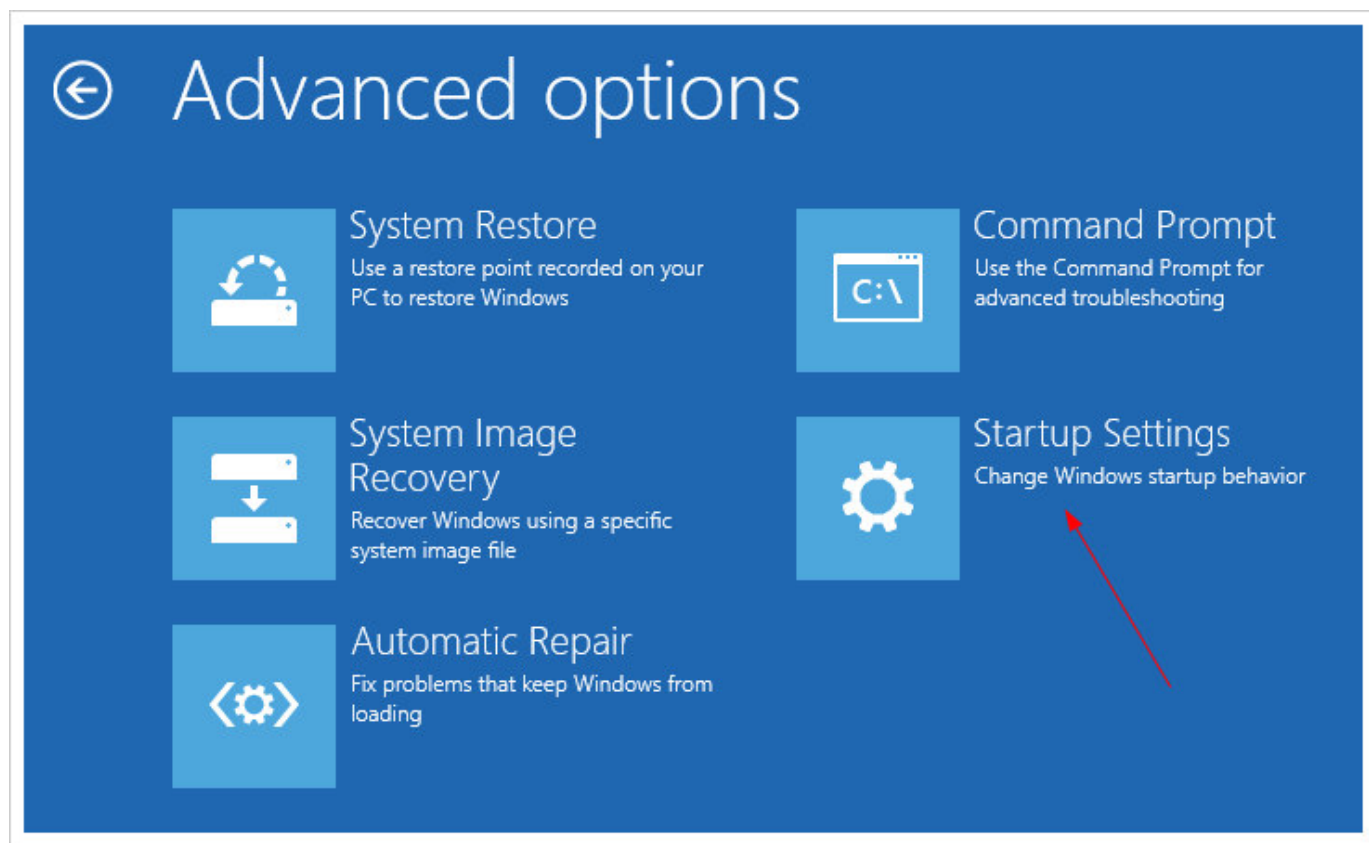




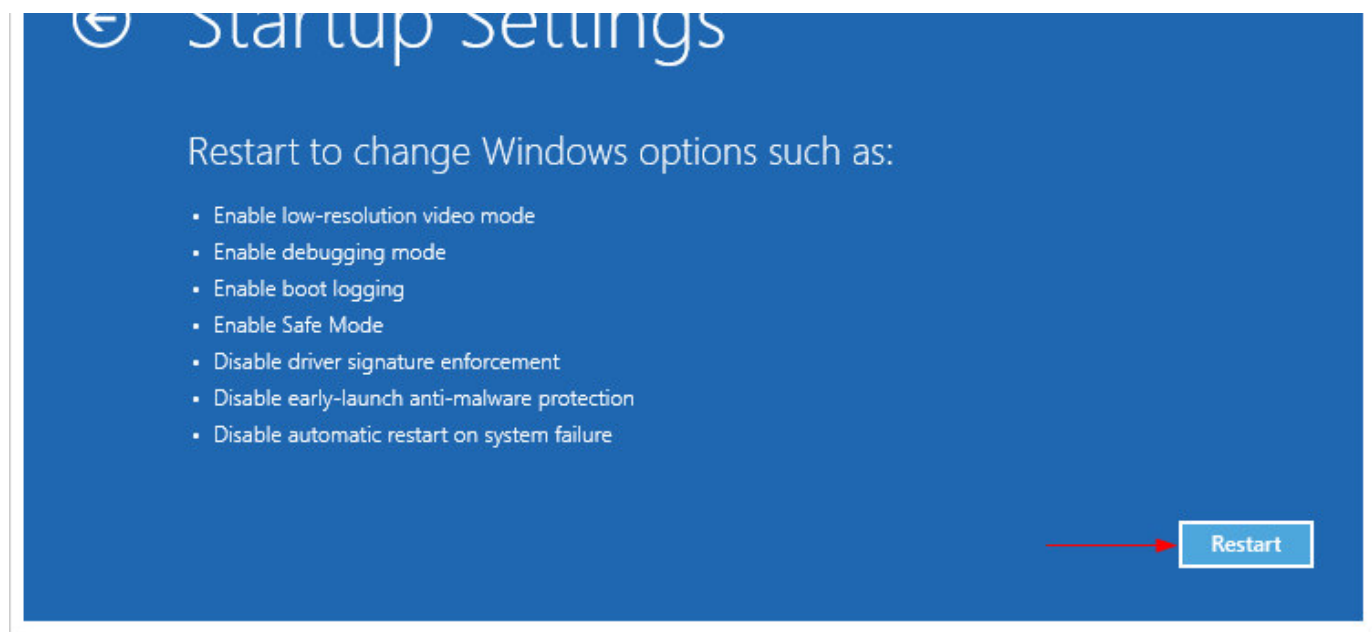
And click **Advanced Options** at next screen.



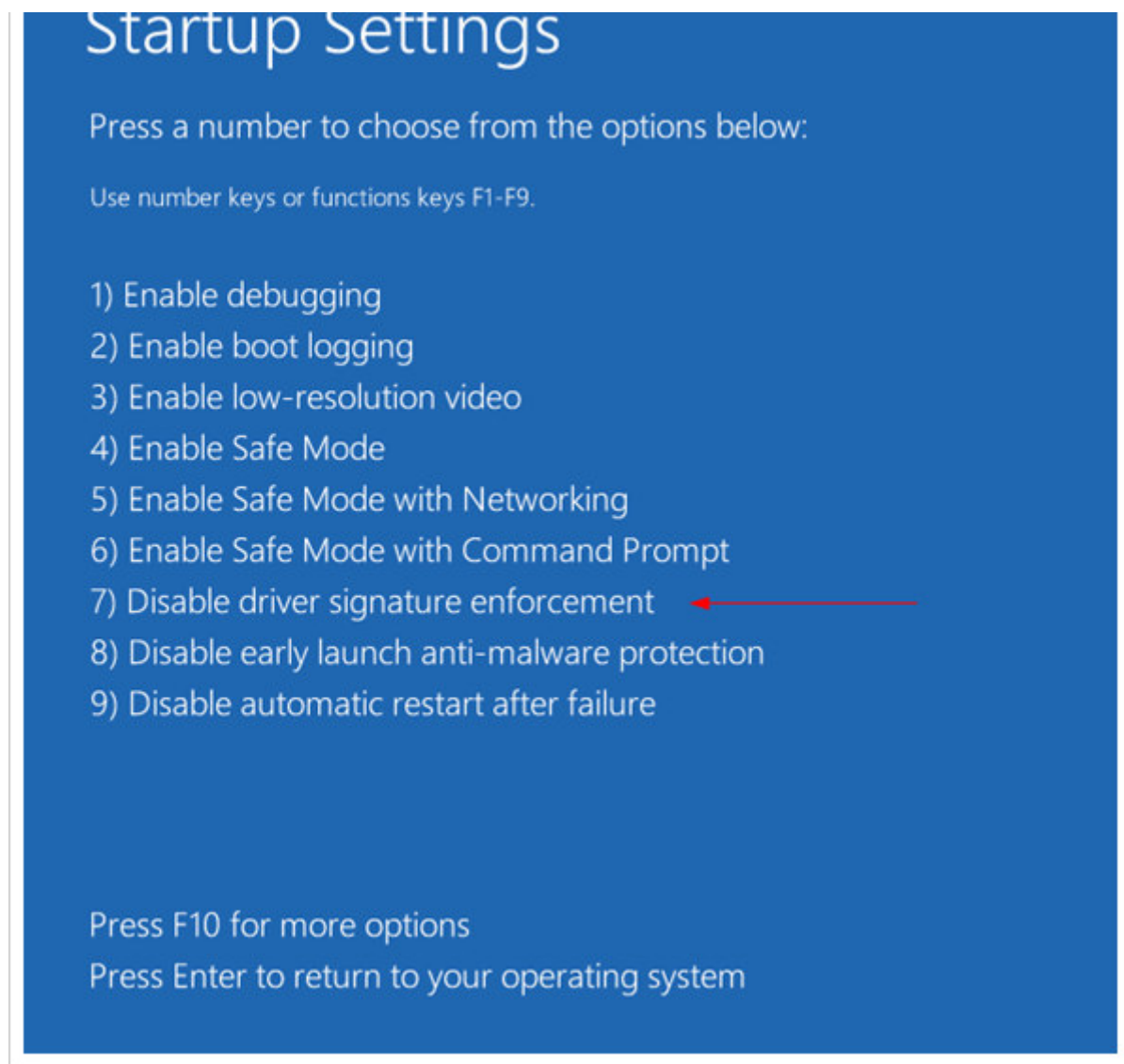
Choose **Startup Settings** next,



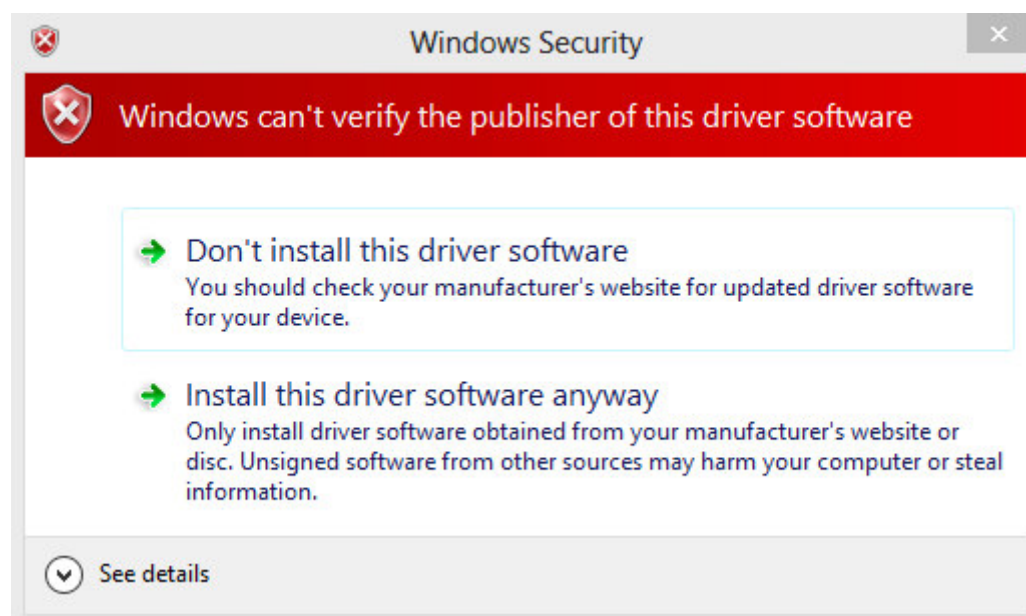
And click **Restart** button.



The computer reboots and prompts another menu to choose. One of the items is to **Disable driver signature enforcement**. Press number **7** or **F7** to continue booting to Windows 8 with [digital sign](#) enforcement disabled.



And then I was able to get the Windows Security warning window offering me to install this driver anyway.



I would suggest changing the UAC settings first to see if the Install Anyway window prompts out. The solution showing off in this post should be the [last resort](#) to try out. And make sure the driver you are about to install is safe, though not digitally signed.

Sharing is caring:

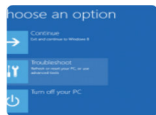


เรื่องบ้านของ 2พี่น้อง

เดินทางจากลอนดอนกลับกรุงเทพด้วยรถไฟ และการค้นพบตัวตนระหว่างการเดินทาง

by **rexonathailand** on YouTube

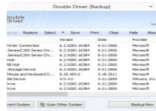
In Case You've Missed It



[How To Boot to Safe Mode in Windows 8](#)



[Guide On Fix Mac TrackPad Multi Gesture Not Working in Windows 7 and Windows 8](#)



[Backup Your Device Driver with Double Driver](#)



[DriverZone Keeps Your Device Drivers Up-to-Date Easily](#)



[The Easiest Way to Scan and Update Your Device Drivers](#)



[Why Windows 8 Wireless Keep Disconnecting – Top Five Troubleshooting Technique](#)

Zemanta



About Kent Chen

Microsoft MVP, IT Professional, Developer, Geek, and the co-founder of Next of Windows.

[View all posts by Kent Chen →](#)

Posted in: [Windows 8](#)

Related Items: [Advanced Startup](#) / [driver](#) / [Security](#) / [windows 8](#)

 [About Us](#) [Windows](#) [Windows 8 Apps](#) [Windows Phone](#) **** FREE eBooks ****

« « Last Post

[Windows 8 Tip: Enable/Disable
File Delete Confirmation Dialog
Box](#)

Next Post » »

[7 Windows 8 Tips to Make
Better Use of Dual Monitors](#)

[Best](#)[Community](#)[Share](#) **Jerimiah Jonson** • 10 months ago

What a stupid system. Why not let users opt out. It's not as if MS is losing money on support calls.

7

[Reply](#) [Share](#) ›**janenrichs** • 7 months ago

I still have problems getting the legacy driver running permantly on every windows start. Even with "test mode enabled" windows won't accept the driver. I always have to go through the start up procedure as described here. Is there any other option to get the driver working on every new startup?

2

[Reply](#) [Share](#) ›**Nav** → [janenrichs](#) • 2 months ago

I agree. "Test mode enabled" doesn't do squat. Have to restart my goddamned machine and select the above mentioned option to make it work.

[Reply](#) [Share](#) ›**Tiago** → [janenrichs](#) • 4 months ago

My driver also stops to work when I restart my computer, making Windows boot in normal mode again. When I verify the reason why the device is not working properly it says: "driver was not digitally signed". It works again just if I restart the system in "Disable driver signature enforcement". Microsoft is just stupid....

[Reply](#) [Share](#) ›**Kent Chen** **Mod** → [janenrichs](#) • 7 months ago

I think that's the only to get the legacy uncertified driver installed on Windows 8. If you are often building a lot of similar systems, you may want to look at building your own imaging system, like this one - <http://www.nextofwindows.com/h...> :)

[Reply](#) [Share](#) ›**rseiler** • a year ago

I'm quite surprised the driver continued to work after re-enabling signature enforcement. It wouldn't if it was a boot driver (e.g. video), that's for sure.

1

[Reply](#) [Share](#) ›**Rally** • 11 months ago

That does not work for all drivers anyway

[Reply](#) [Share](#) ›[Comment feed](#)[Subscribe via email](#)

